

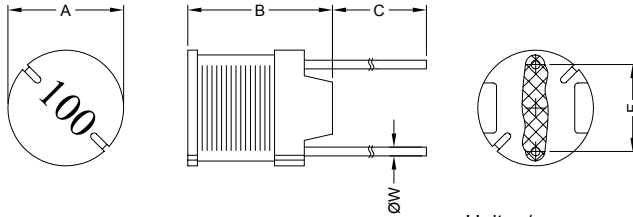
1. PART NO. EXPRESSION :

R C C 1 0 1 4 1 0 0 K Z F
 (a) (b) (c) (d)(e)(f)

- (a) Series code
- (b) Dimension code
- (c) Inductance code : 100 = 10.0uH

- (d) Tolerance code : K = ±10%
- (e) X, Y, Z : Standard part
- (f) F : Lead Free

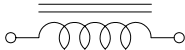
2. CONFIGURATION & DIMENSIONS :



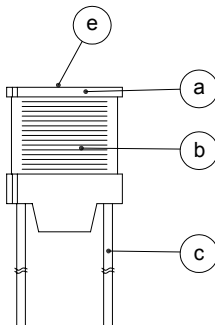
Unit:m/m

A	B	C	F	ØW
10.00±0.5	14.40 Max.	15.00±3.0	5.0±0.5	0.80±0.10

3. SCHEMATIC :



4. MATERIALS :



- (a) Core : DR Ferrite Core
- (b) Wire : Enamelled Copper Wire
- (c) Lead : Tinned Copper Wire
- (d) Adhesive : Epoxy
- (e) Ink : Bon Margue

5. GENERAL SPECIFICATION :

- a) The inductance drop at rated is 10% max.
- b) Temp. rise : 40°C max. at rated current
- c) Storage temp. : -40°C to +125°C
- d) Operating temp. : -40°C to +85°C



RoHS Compliant

NOTE : Specifications subject to change without notice. Please check our website for latest information.

01.07.2008

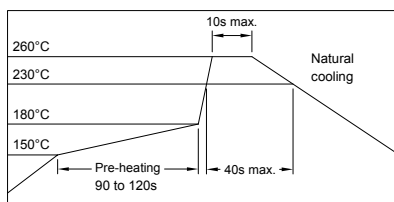


SUPERWORLD ELECTRONICS (S) PTE LTD

6. ELECTRICAL CHARACTERISTICS :

Part No.	Inductance (μH)	Test Frequency (Hz)	RDC (Ω) Max.	IDC (A) Max.
RCC1014100KZF	10.0 \pm 10%	2.52M	0.033	4.00
RCC1014120KZF	12.0 \pm 10%	2.52M	0.035	3.90
RCC1014150KZF	15.0 \pm 10%	2.52M	0.039	3.70
RCC1014180KZF	18.0 \pm 10%	2.52M	0.047	3.50
RCC1014220KZF	22.0 \pm 10%	2.52M	0.051	3.30
RCC1014270KZF	27.0 \pm 10%	2.52M	0.057	3.10
RCC1014330KZF	33.0 \pm 10%	2.52M	0.064	2.90
RCC1014390KZF	39.0 \pm 10%	2.52M	0.074	2.70
RCC1014470KZF	47.0 \pm 10%	2.52M	0.083	2.50
RCC1014560KZF	56.0 \pm 10%	2.52M	0.104	2.30
RCC1014680KZF	68.0 \pm 10%	2.52M	0.117	2.10
RCC1014820KZF	82.0 \pm 10%	2.52M	0.130	1.90
RCC1014101KZF	100.0 \pm 10%	1K	0.143	1.70
RCC1014121KZF	120.0 \pm 10%	1K	0.195	1.50
RCC1014151KZF	150.0 \pm 10%	1K	0.221	1.40
RCC1014181KZF	180.0 \pm 10%	1K	0.260	1.30
RCC1014221KZF	220.0 \pm 10%	1K	0.350	1.20
RCC1014271KZF	270.0 \pm 10%	1K	0.390	1.10
RCC1014331KZF	330.0 \pm 10%	1K	0.520	1.00
RCC1014391KZF	390.0 \pm 10%	1K	0.570	0.92
RCC1014471KZF	470.0 \pm 10%	1K	0.650	0.84
RCC1014561KZF	560.0 \pm 10%	1K	0.790	0.75
RCC1014681KZF	680.0 \pm 10%	1K	0.960	0.69
RCC1014821KZF	820.0 \pm 10%	1K	1.220	0.62
RCC1014102KZF	1000.0 \pm 10%	1K	1.600	0.52

RECOMMENDED SOLDERING CONDITIONS REFLOW SOLDERINGS



RoHS Compliant

NOTE : Specifications subject to change without notice. Please check our website for latest information.

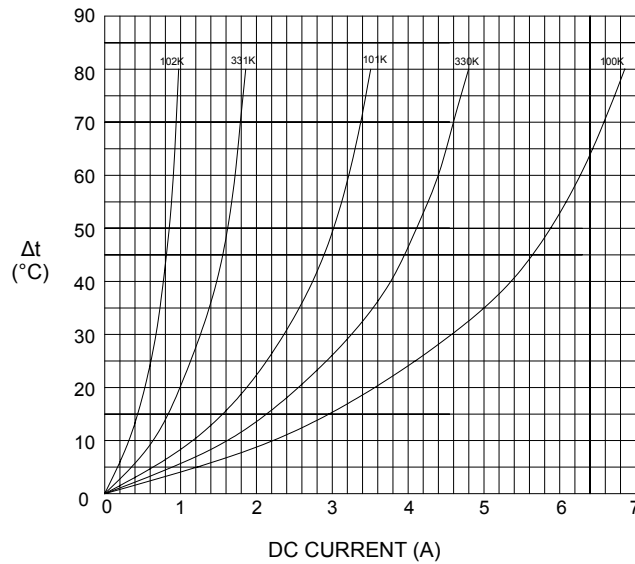
01.07.2008



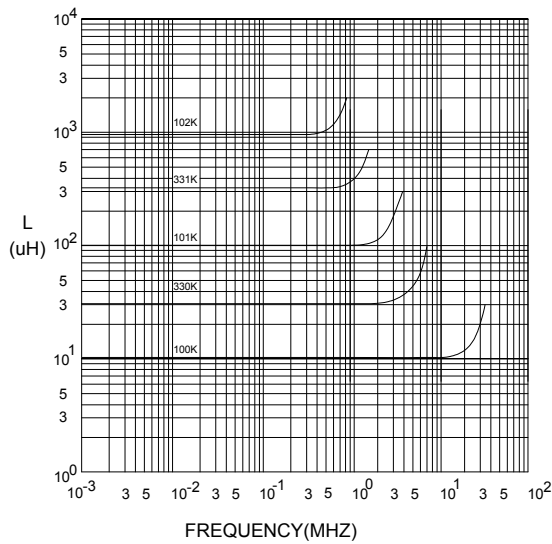
SUPERWORLD ELECTRONICS (S) PTE LTD

7. CHARACTERISTICS CURVES :

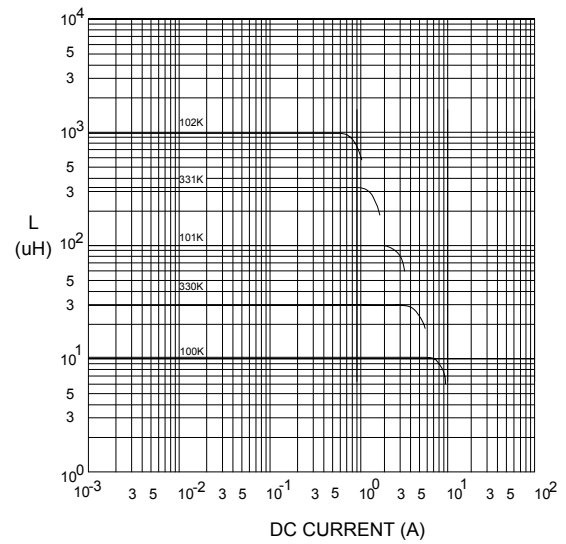
@ TEMP. RISE VS. DC SUPERPOSITION RESPONSE CURVE



@ INDUCTANCE VS. FREQUENCY RESPONSE CURVE



@ INDUCTANCE VS. DC SUPERPOSITION RESPONSE CURVE



RoHS Compliant

NOTE : Specifications subject to change without notice. Please check our website for latest information.

01.07.2008



SUPERWORLD ELECTRONICS (S) PTE LTD

8. PACKAGING INFORMATION :

Size	RCC1014
Inner Package	Box (small)
Quantity	100 pcs

9. UL CARD :

OBMW2

November 30, 2000

Magnet Wire - Component

PACIFIC ELECTRIC WIRE & CABLE (SHENZHEN) CO LTD
607 BAOLONG INDUSTRIAL ESTATE LONGGANG, SHENZHEN
GUANGDONG CHINA

E201757

Mtl Dsg	BC	Coating Type	TC	ANSI Type	TI
UEW/U		Polyurethane	—	—	130
PEW/U		Polyester	—	MW5-C	155°C
PEWH/U		Modified Polyester	—	MW30-C	180
PEW-NY/U		Polyester		Polyamide MW24-C	155
HAI/U		Polyester(Amide)(Imide)		Polyamideimide MW35,73	200
UEW-NY/U		Polyurethane		Polyamide MW80-C	155
				MW28-C	130

Marking: Company name and material designation or marked designation on package or reel, and Recognized Component Mark.

See General Information Preceding These Recognitions

1/3/2001

Underwriters Laboratories Inc.

Card 1 of 2



RoHS Compliant

NOTE : Specifications subject to change without notice. Please check our website for latest information.

01.07.2008



SUPERWORLD ELECTRONICS (S) PTE LTD